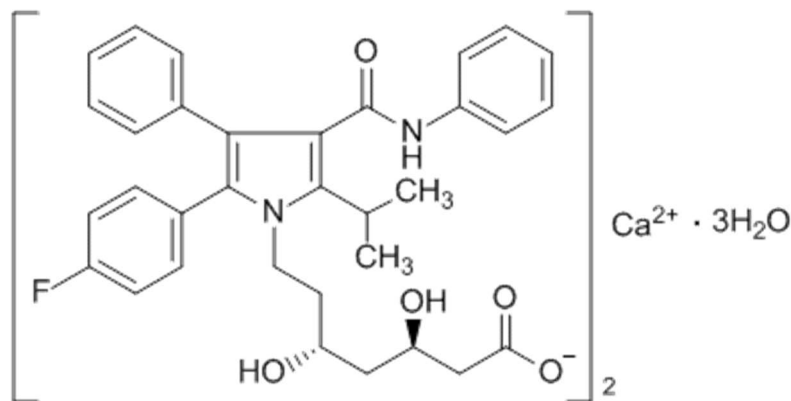


Atorvastatin Calcium Trihydrate
10 mg Tablets

Structure:



Molecular Formula and Mass: $\text{C}_{66}\text{H}_{68}\text{F}_2\text{N}_4\text{O}_{10}\text{Ca} \cdot 3\text{H}_2\text{O}$ - 1209.407

Category: Statin

Sample:

Grind one tablet and dissolve in 25.0 mL of methanol. Shake for at least 15 min and filter. Final concentration of sample solutions = 10.0 mg/25.0 mL and = 0.400 mg/mL, which is the required concentration representing 100%.

Standards:

High Standard:

The high limit is 115%; therefore the concentration of the high standard = $0.400 \text{ mg/mL} \times 1.15 = 0.460 \text{ mg/mL}$. Weigh approximately 23.0 mg of standard. If you weighed 23.1 mg of standard, dissolve it in: $23.1 \text{ mg} \div 0.460 \text{ mg/mL} = 50.2 \text{ mL}$ of methanol. This makes the high standard solution concentration equal to 0.460 mg/mL.

Low Standard:

The low limit is 85%; therefore the concentration of the low standard = $(0.400 \text{ mg/mL} \times 0.85) = 0.340 \text{ mg/mL}$. Dilute 3.00 mL of high standard to 4.00 mL by adding 1.00 mL of methanol. This gives a concentration of $0.460 \text{ mg/mL} \times 3.00 \text{ mL} \div 4.00 \text{ mL} = 0.345 \text{ mg/mL}$.

Spotting:

Spot on the $5 \times 10 \text{ cm}$ silica gel TLC aluminum plate with 3.00 μL aliquots as follows:

Left spot	low standard (85%) = 1.04 μg
Center Spot	100% sample = 1.20 μg
Right Spot	high standard (115%) = 1.38 μg

Development:

Mix 30.0 mL of ethyl acetate, 8.00 mL of methanol, and 2.00 mL concentrated ammonia. Develop the plate in a small glass chamber with approximately 20.0 mL of this solution until the solvent front reaches within 1 cm of the top of the TLC plate.

($R_f = 0.17$)

Detection:

UV:

Dry the plate and observe under ultraviolet light at 254 nm. Observe the intensities and the sizes of the spots.

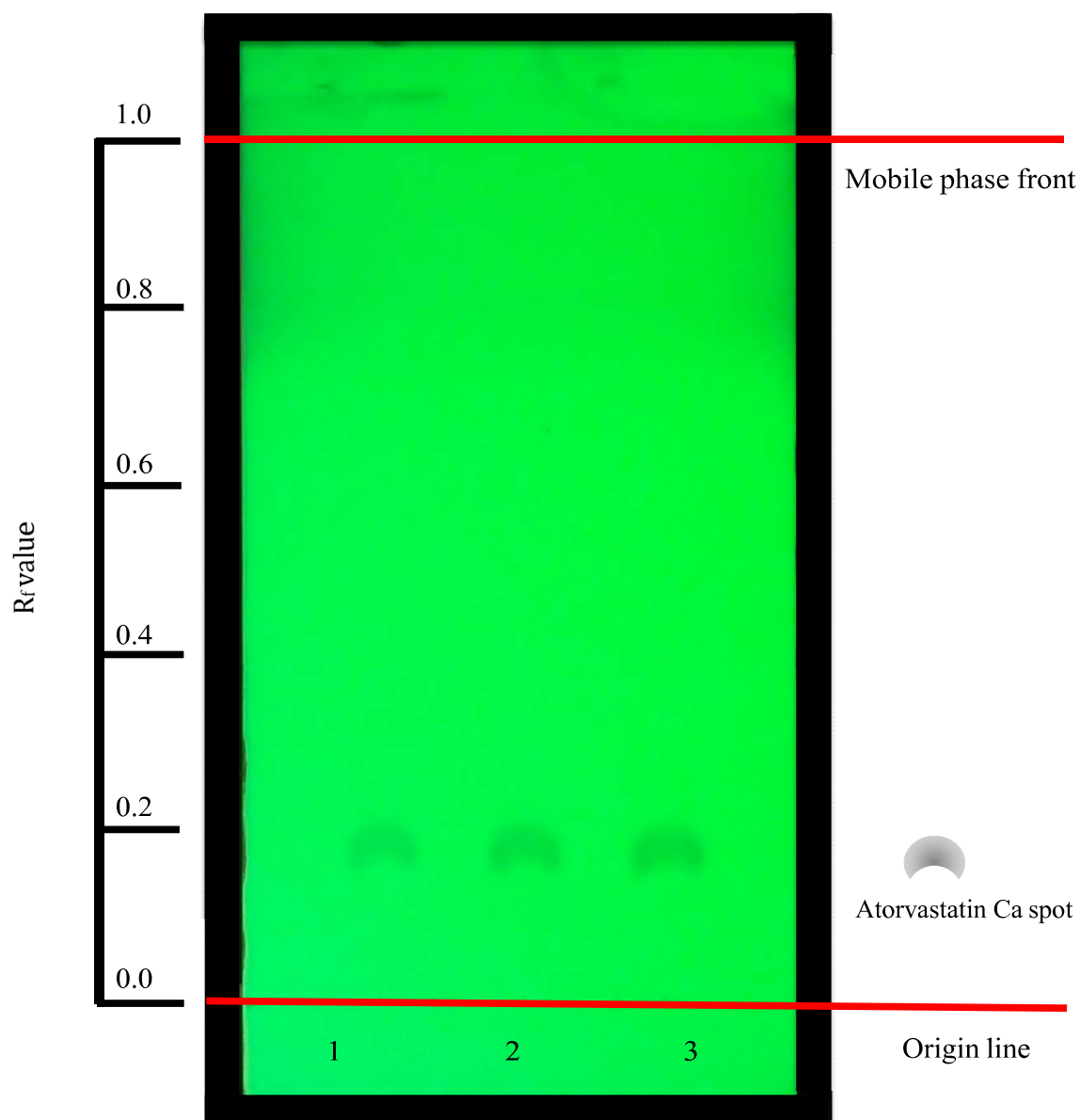


Plate observed under ultraviolet light at 254 nm

Lane 1: Low standard (85%) = 1.04 μg

Lane 2: 100% sample = 1.20 μg

Lane 3: High standard (115%) = 1.38 μg

Developed and tested by Bingsong Zeng and Joseph Sherma
Department of Chemistry, Lafayette College, Easton, PA, USA
September 2017

Bingsong Zeng's EXCEL Scholar research was supported by Lafayette College EXCEL Scholars Program